



2025 Impact Report

A Journey of Innovation and Impact



A Message to from Leadership

Building impact that lasts

Impact is not a headline. It is the cumulative result of consistent choices made by entrepreneurs who decide to keep building meaningful solutions in uncertain and fast-changing contexts. **In 2025, Impact Hub Kigali celebrates ten years of supporting entrepreneurs and strengthening businesses beyond the early stages.**

Through our tailored programs, we have helped founders sharpen their models, make better strategic decisions, and access capital with intention. Our work has been defined by selectivity, proximity to ventures, and partnerships designed to translate ambition into action.

With some distance, 2025 reads as a year of alignment rather than difficulty. We refined how we support founders to build and scale with greater precision, while working closely with partners and investors to ensure capital is more deliberate and anchored in long-term value creation. This convergence strengthens the ecosystem in tangible ways and enables the ventures we support to move forward with greater confidence and purpose.

None of this happens without the people and partners who make the work possible. Behind each program and milestone is the Impact Hub Kigali team, alongside a trusted pool of experts who challenge assumptions, bring practical insight, and stay closely engaged with founders through complex moments. Their discipline, passion, and commitment to quality are what turn support into real progress. Together with partners who trust us, we are able to deepen our programs and contribute to meaningful progress across the country and the region.

The outcomes captured in this report reflect that shared effort. They signal an ecosystem that continues to mature, one shaped by collaboration and long-term thinking. While the work ahead will require even more focus and collective action, the direction remains clear: supporting ventures to build resilient models, operate in real markets, and create impact that lasts.

Thank you for shaping this journey with us, and we invite you to continue building impact — together!

Alejandro Jiménez Santofimio

Managing Director
Impact Hub Kigali

10 – Year Roadmap

Our First Decade, **Just the Beginning**

Founding the Vision

We launched Impact Hub Kigali. We set up our team, secured early supporters, joined the IH Global Network, and opened our first co-working space — a **home for Rwanda's changemakers.**

2015

Building Community & Igniting Innovation

We grew a vibrant community of entrepreneurs and creatives through networking gatherings and events like the "I am Kigali" festival. We also launched our first Solar Entrepreneurship Program with WWF — empowering 500+ students in solar innovation.

2016–2017

Connecting Solutions Across Africa

We led pioneering hackathons, ideathons and challenges on climate resilience, mobility, and smart cities. We also hosted the first African Innovation Hubs Convention, convening 48 hubs from 25 countries.

2018

Expanding Our Offerings

We started running core innovation programs, we deepened our ecosystem work through tours and mapping exercises, and expanded consulting services

2019 –2020

Scaling Acceleration Support

We launched high-impact programs in Circular Economy, Food Systems, and Agriculture. We reimagined acceleration journeys, introducing tailored startup support with financial backing, and building a strong pool of regional experts — leading to multiyear programs.

2021–2023

Powering Growth

We relaunched our co-working space and scaled support for growth-stage startups through multi-cohort programs like develoPPP Ventures, Ignite 3.0, AfriCircular Innovators, Agritech4Rwanda, and GAFP.

2024–2025

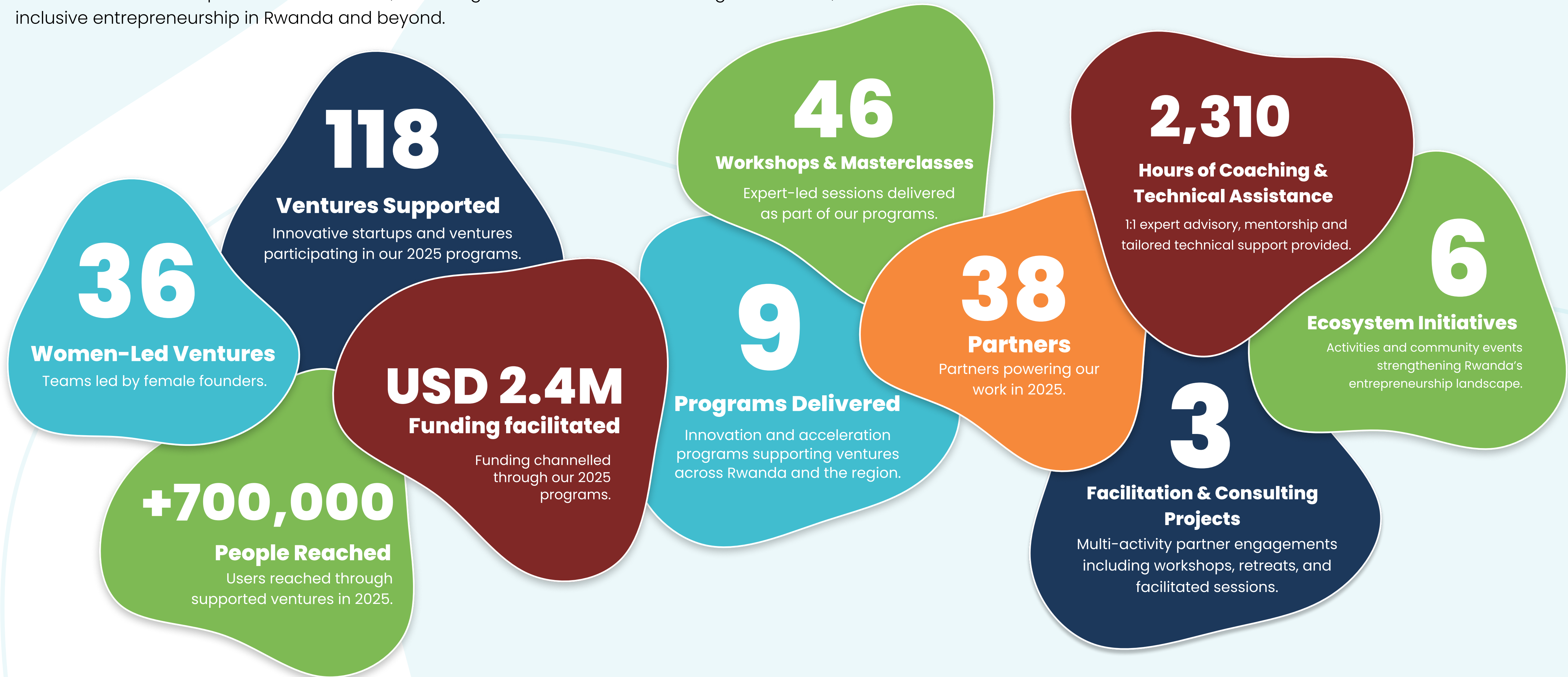
2025

Celebrating 10 Years of Impact

We are celebrating a decade of transformation and impact: **500+ ventures** supported through **40+ innovation & acceleration programs**, **USD 4.6M funding facilitated**, **120+ strategic partners**, and a thriving innovation ecosystem built through community events and collaborations.

2025 : A Transformative year

2025 marked a milestone year for Impact Hub Kigali as we proudly celebrated 10 years of strengthening Rwanda's innovation ecosystem. This report specifically focuses on the achievements and impact realized in 2025, reflecting our commitment to driving sustainable, inclusive entrepreneurship in Rwanda and beyond.



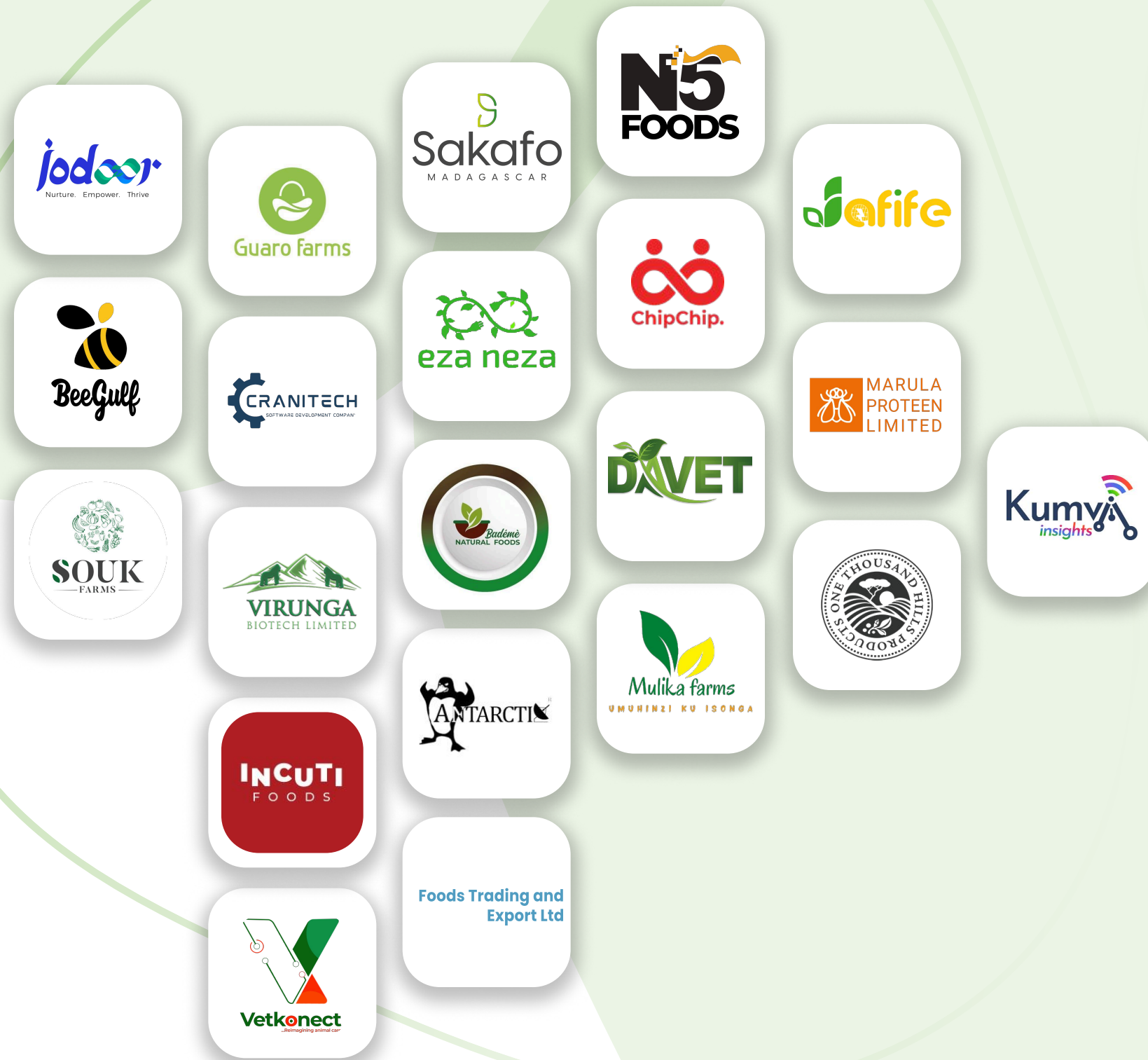
Driving Change, Venture by Venture : Expanding Our Sector Footprint

Our 2025 venture portfolio showcases the breadth and strength of the continent's innovation landscape.

This year, our work spanned three core impact domains, reflecting the diversity of challenges African entrepreneurs are solving.

AgriTech & Food Systems

Ventures strengthening agri-food value chains through technology, processing, production, and market access – from farm-level innovation to consumer-ready products.



Circular & Regenerative Models

Ventures designing systems that reduce waste, reuse resources, and regenerate value through circular materials, regenerative agriculture, and sustainable production models.



Health, FinTech & Inclusive Services

Ventures expanding access to essential health, financial, and livelihood services through inclusive, tech-enabled, and affordable solutions.



[Explore The Full Portfolio](#)

These ventures demonstrate the growing breadth of Africa's entrepreneurial potential and the impact of targeted, tailored support.

2025 Impact Report

A Journey of Innovation & Impact

A group of diverse people in a meeting room with their hands raised in celebration. The room has large windows overlooking a cityscape. The people are wearing various professional and casual attire, including a purple blazer, a blue plaid shirt, a black shirt with red hearts, and a red and black dress. The atmosphere is energetic and positive.

Innovation Programs

Our innovation programs provide tailored acceleration support that help ventures refine their innovations and grow sustainably. The following section highlights selected 2025 programs.

Kura Na Agtech Acceleration Program

Kura Na AgTech, led by **Swisscontact** in partnership with Impact Hub Kigali, is a 4-month acceleration program that empowers Rwanda's promising agritech startups to scale solutions that **improve smallholder farmer livelihoods, boost food security, and strengthen agri-food systems.**

Key Metrics

3

Startups Supported

High-potential startups accelerated to scale farmer-focused innovations.

312

Technical Assistance Hours

Hands-on expert support across product, operations, and growth.

USD 37,000

Funding Facilitated

Capital unlocked to test, grow, and move to market.

AgriTech4Rwanda Innovation Challenge

The AgriTech4Rwanda Innovation Challenge, powered by the **Rwanda Green Fund** through Ireme Invest, in collaboration with the **CGIAR Hub for Sustainable Finance (ImpactSF)**, the **CGIAR Accelerate for Impact Platform (A4IP)**, and **Impact Hub Kigali** with funding from the **Gates Foundation**, is a groundbreaking initiative designed to enhance climate resilience in Rwanda's agricultural sector. **The Challenge identifies and supports high-potential agri-tech ventures that can transform the sector.**

Key Metrics

25

Ventures Supported

Climate-smart agri-tech solutions identified and backed to strengthen sector resilience.

10

Masterclasses

Expert sessions strengthening climate- smart adaptation and investment readiness.

~USD 850,000
Recoverable Grant financing

Capital committed to scale solutions.

94

Technical Assistance Hours

Targeted advisory support delivered.



develoPPP Ventures Program

develoPPP Ventures in Rwanda, an initiative of **DEG Impulse**, in partnership with **VC4A** and **Impact Hub Kigali**, supports start-ups with innovative business models that substantially enhance living standards in emerging markets. Through a matching funds model, it offers EUR 100,000 non-dilutive funding paired with technical assistance to assist in the scaling of operations and prepare for future fundraising rounds.

Key Metrics

10

Ventures Supported (2 Cohorts)

Startups accelerated toward scalable growth in 2025.

720

Expert Advisory Hours

Hands-on support to strengthen venture growth

EUR 1M

Funding Committed

Combined funding committed across the two cohorts in 2025.

Generation Africa Fellowship Program

The Generation Africa Fellowship Programme (GAFF), led by **Generation Africa** and **AGRA**, is a six-month initiative supporting emerging youth agripreneurs with tailored coaching and mentorship to grow resilient businesses and become investment-ready. The program equips fellows with essential business skills and knowledge while strengthening leadership and soft skills.

Key Metrics

219,482

Users / Beneficiaries Reached

End users impacted through fellows' solutions.

20

Ventures Supported (15 Countries)

Youth-led agribusinesses strengthened across the continent.

429

Technical Support Hours

Targeted coaching and expert advisory delivered.



Venture Impact Story : Kosmotive

Ending Period Poverty For Women and Girls across the Region

Blandine Umuziranenge didn't start Kosmotive because she wanted to run a business. She started it because of a number she still can't shake: **"Did you know that 2 million girls miss school or work because they can't afford pads?"** For her, that wasn't a statistic. It was a daily injustice.

Kosmotive grew from that urgency - reusable pads that last two years, health education, and a belief that periods shouldn't cost anyone their dignity or their future. But turning that belief into a functioning venture took more than determination. It took guidance. Pressure. **The kind of support that asks hard questions and sits with you through the uncomfortable parts.**

That's where Impact Hub Kigali came in. Blandine remembers it clearly: *"Someone was taking time to understand our business."* Not just the products, but the decisions, the blind spots, the choices she knew she needed to make but hadn't made yet.

Through KosmoPads - reusable pads that last two years and save girls and women up to 88 percent of what they would spend on disposables - and the KosmoHealth app, Kosmotive provides dignity and practical tools to young girls and women from underprivileged communities across Rwanda and the region. It's more than affordability. It's behavior change.

"The women in our production and distribution come to see their period as a source of light and power," Blandine explains. And the push for circular design goes beyond reducing waste; it challenges the stigma around what it means to simply be a young girl moving through her monthly cycle.

Impact Hub Kigali's support followed Kosmotive through different stages of growth. During the Circular Economy Program, Blandine remembers being pushed to think differently. *"We thought our pads lasting two years was enough. Then we learned to think about afterlife."* That shift led them to redesign materials, remove labels entirely, and rethink how circularity could guide their decisions.

Then came develoPPP Ventures. It was the first time she applied for a major program and received support during the application itself. *"Most programmes, you feel alone until you make it,"* she says. *"But with this one, there was always someone walking with us, even when the financial model felt really hard."* That experience built clarity, confidence, and credibility - not just for Kosmotive, but for other entrepreneurs watching her succeed. *"People started approaching me from different countries, asking how to apply. They saw someone who looks like them make it."*

Impact Hub Kigali's experts also worked with her to shape Kosmotive's regional expansion strategy. That groundwork now anchors their next chapter: a flexible payment model developed through the EPR project. *"We're hoping that every girl, every woman across Eastern and Central Africa can access products in a way that is affordable to them,"* Blandine says. Whether through small installments or flexible options, the goal is clear. *"No girl should stay home because she's waiting for a pad she can't afford."*

This is the kind of support that matters: consistent, contextual, and transformative. The kind that doesn't center the program. It centers the progress.

Refugee Economies Deserve More Than Good Intentions. Davet Proves It

When Adeline Mukayirere left her job at an international NGO, she wasn't chasing a new title. She was chasing an answer.

"I had seen so many young people and women finish school or training but struggle to find working capital," she recalls. "They had skills, they had drive, but no resources to start."

That gap - the one between knowledge and opportunity - is what shaped Davet. What began as a modest agribusiness has grown into a venture working with smallholder farmers, refugees, and host communities, providing livestock, agricultural inputs, and practical training so people can earn and build long-term stability. By the time Adeline applied to the Ignite Challenge 3.0, Davet was already operating across several agribusiness lines, working with farmers and steadily strengthening its model. Ignite didn't mark the beginning; it refined the path forward.

"I received capacity building, mentorship, and financial support," Adeline says. She talks plainly about what opened the door: a 25,000 USD grant, followed by a 15,000 USD top-up, which gave her the means to expand to Mugombwa and Nyabiheke camps. "I had the idea, but I didn't have the capacity or working capital to reach the refugees. With the Ignite funding, I was able to scale up and include refugees and host communities in our business model."

The expansion was immediate and measurable.

Two abandoned poultry barns in Mugombwa were revitalized, and 1,000 layer chickens were introduced to restart production, supporting a cooperative of over 1,000 members, including 300 refugees. Davet trained 65 people in sustainable poultry practices - 15 of them refugees - and set up a model where each household could increase its monthly income by 20% through predictable egg production.

In Nyabiheke, Davet helped restore two mushroom hangars previously sitting idle. Today, 1,000 mushroom tubes are cultivated each month, producing 500 kg of mushrooms and generating about 500 USD in monthly revenue for the cooperative, with 30 refugees trained to manage production and sales. Across both communities, the project has engaged 150+ people in income-generating activities, trained 95 individuals, and created 45 jobs through working-capital support that doesn't require upfront payment - a critical shift for vulnerable households with no liquidity to spare.

But money wasn't the only lever. Adeline describes the coaching from the Impact Hub team as the part that improved how she actually runs the business. *"I was mixing many parts of my business together," she says. "The coaching helped me organise each sector properly, create a management system, and keep better records. I realised I didn't have to stop any line of the business; I just needed structure."*

Those adjustments allowed Davet to do the work it had always planned: revitalising abandoned poultry barns, training local farmers and refugees, and strengthening mushroom production in Nyabiheke. People who previously had no access to livestock, inputs, or reliable markets now participate directly in production and income generation.

Still, Adeline's emphasis stays on people, not numbers. *"The women, the youth, the refugees - they now have something they can build on," she says. "They are not waiting; they are involved."* And when she reflects on what made the experience different, she doesn't talk about frameworks or toolkits.

"Impact Hub Kigali is not like other organizations," she says. "They are cool, easy to work with, not stressful. The whole experience was smooth."

Davet's Progress is a story about a founder who finally got the right mix of capital, structure, and human support and used it to strengthen a model that communities can rely on.



2025 Impact Report

A Journey of Innovation & Impact

A group of diverse people in a meeting room, smiling and clapping. In the foreground, a man in a blue shirt is smiling broadly with his arms outstretched. Behind him, several women are also smiling and clapping. The room has large windows overlooking a cityscape. The overall atmosphere is positive and collaborative.

Facilitation & Consulting

We partner with organizations to co-design solutions, guide collaborative processes, and deliver facilitation that moves projects forward.

AGYLE Alumni Meet-Up

This project strengthens purposeful and sustainable leadership across four dimensions: leading yourself, your people, your team, and your organization. Participants worked towards building resilience, inspiring others, exploring cultural perspectives, and creating sustainable team cultures while learning to scale their impact and drive systemic change.

Through interactive activities and peer learning, they gain practical tools and a renewed commitment to purpose-driven leadership.



44

Young leaders from
across the continent
Engaged

Women's Economic Empowerment (WEE) Facilitation

As part of the GIZ WEE initiative, **Impact Hub Kigali designed and moderated a series of high-energy events promoting women's leadership and entrepreneurial growth.** From role-model conversations to a women-led SME pitch event, a session on measuring gender-transformative change, and the Women Economic Forum, each engagement created space for learning, visibility, and meaningful dialogue across Rwanda's ecosystem.



4

Facilitated Events Advancing Women's
Economic Empowerment

2025 Impact Report

A Journey of Innovation & Impact

A diverse group of people, including men and women of various ethnicities, are seated in an audience. They are all clapping their hands, suggesting they are at a celebratory or appreciative event. The background is slightly blurred, showing more people and what appears to be an indoor event space with some structural elements.

Ecosystem & Communities

Through events and community-driven initiatives, we create spaces for actors to connect, share knowledge and collaborate.

NGO Showcase & Demo Day

The NGO Showcase & Demo Day, hosted by the German Embassy in Rwanda in partnership with Impact Hub Kigali, brought five local nonprofits into the spotlight, giving them the storytelling, pitching, and visibility support needed to reach new audiences.

Through coaching, video production, and a curated final showcase, the event created a platform where NGOs could present their work to partners, funders, and ecosystem actors with clarity and confidence. **The initiative strengthened the role of non-profits in Rwanda's innovation landscape by elevating community-driven solutions and connecting them with people who can help scale their impact.**



CIRF Investor Forum 2025

The CIRF Investor Forum, part of the Circular Food Systems for Rwanda (CIRF) programme funded by the IKEA Foundation and implemented by a World Resources Institute (WRI) - led consortium in collaboration with the Government of Rwanda, convened circular agri-food SMEs, investors, and ecosystem actors for two days of focused discussions and curated matchmaking.

The Forum enabled entrepreneurs to present their circular solutions, explore financing pathways, and build relationships critical for early-stage growth strengthening the network driving Rwanda's circular economy forward.



Partner Voices

At Impact Hub Kigali, **partnerships are long-term relationships built on shared vision, co-creation, and a commitment to innovation and impact.**

Our collaborations are fueled by trust, adaptability, and the belief that lasting change happens when diverse players work together with intention.



Giulia Chiaventi – Programme Policy Officer
UN World Food Programme

“ What impresses me most is their unwavering commitment to co-creating solutions that are both locally relevant and sustainable. **Their team stands out for being supportive, proactive, and deeply dedicated to empowering project participants through innovative approaches.** ”



Elisa Luotonen | Expert in Circular Economy
African Development Bank Group (AfDB)

“ The team’s innovative approach to circular economy, proactive project management, and on-the-ground engagement ensured the successful achievement of the program’s results, enabling enterprises to increase their revenue and expand their workforce. ”

What sets IHK apart is its can-do attitude and community-driven approach.



Fina Kayisanabo | Senior Project Manager
Swiss Contact

“ Our collaboration is open, adaptive, and grounded in clear communication. ”

We value Impact Hub Kigali’s ability to identify a great pool of startups, implement quickly and design relevant and meaningful startup support packages.



Thomas van Halen | Senior Program Director
Venture Capital for Africa (VC4A)

“ Working with Impact Hub Kigali is a true pleasure. **The team brings deep local knowledge, a strong entrepreneurial network, and a consistent commitment to supporting early-stage ventures.** ”

Through our collaboration we’ve seen tangible results: new companies were successfully onboarded, and the quality of the pipeline sourced was impressive.

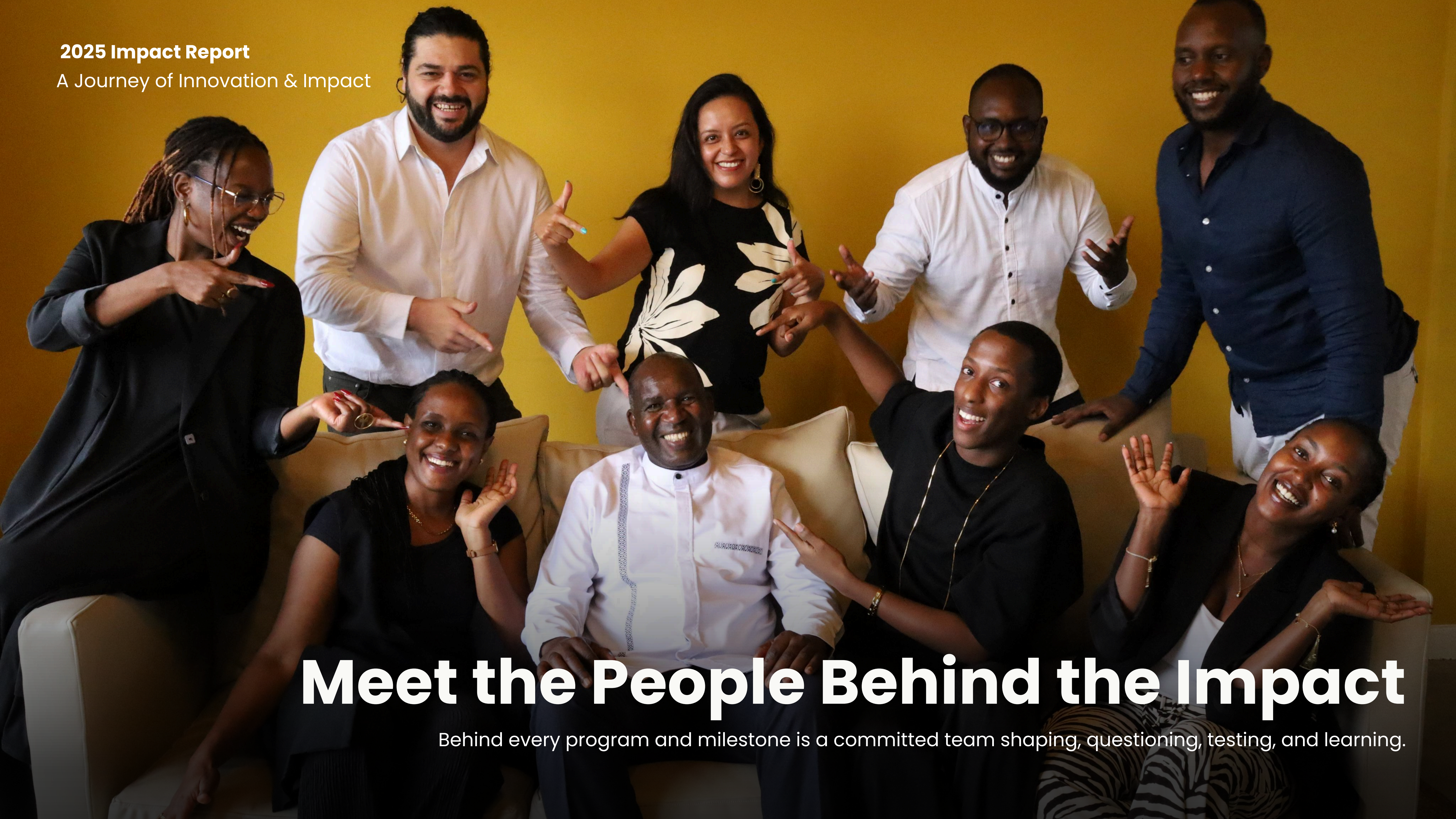


Sven Witthoedt | Senior Investment Manager
DEG Impulse (develoPPP Ventures)

“ **We enjoy working with the IHK team due to its professionalism, business acumen and deep integration into the startup ecosystem.** ”

Thanks to our collaboration we were able to establish our program in the market very quickly and build up an attractive reputation with startups and investors in less than two years.

2025 Impact Report
A Journey of Innovation & Impact



Meet the People Behind the Impact

Behind every program and milestone is a committed team shaping, questioning, testing, and learning.



Alejandro Jiménez

Managing Director

I'm motivated by building a strong, trusted ecosystem where founders can grow their businesses with discipline and ambition. **I'm most proud of the team we've built and the credibility we've earned by consistently delivering meaningful results.**



Cares Manzi

Director of Innovation & Growth

Even the smallest contributions ripple outward here — through ventures, partners, and communities - into impact that's much bigger than anything I could create alone. **That sense of being part of systems change is why this place feels like the right home for me.**



Caroline Numuhire

Venture Support Lead

What makes working with ventures so rewarding for me is the joy of seeing people thrive. **Seeing ventures grow stronger through coaching is deeply meaningful and a reminder that this work matters.**



Chelsea Sangwa

Junior Program Manager

Seeing how **our everyday work compounds over time into real progress for the ventures we serve**, and knowing the IHK team always goes the extra mile — inspires me daily.



Gloria Mutoni

Junior Program Manager

This year taught me that challenges can open doors. **Watching a founder reinvent their entire business model showed me how powerful adaptability and creativity really is.**



Mafer Betancourt

Director of Programs

Working with resilient entrepreneurs, supportive partners and such an incredible team is truly meaningful. I'm happy to be back with IHK and **excited to continue building more impactful programs that take ventures to the next level!**



Maurice Shyaka

Program Manager

The moment a founder shifts from uncertainty to "I can build this" is everything. **That spark of belief and determination, and seeing people pursue solutions that can change their communities, is why I do this work.**



Miles Rwekaza

Brand & Communications Manager

There's a particular honesty to being here - you're close enough to the work to feel its weight, and close enough to the people to see why it matters. That balance is grounding. **I love it here.**



Pontien Bushayija

Office Manager

Being here from the beginning, the Hub feels like a second home - **a place where the little details make people's days easier and the work smoother.**

Impact Hub Kigali's strength comes from the **people who build, guide, and challenge this work every day.**



Andrew Herweg
Market Growth & International Expansion



Annick Umutibagirana
Agriculture Systems & Legal Certification



Astelie Ngarambe
Strategic Branding & Go-to-Market



Ivan Asiimwe
Founder & CEO at EnerBot



Isaac Nkusi
Financial Management & Financial Literacy



Jackson Karara
Hydroponics & Food Systems Innovation



Jacques Mutabaruka
Financial Systems & Advisory



ALSM Consulting Group
Audit & Financial Advisory Services



Jeanne Abayo
Pricing & Financial Planning



Joanna Nicholas
Investment Readiness & Fundraising



Laura Baringer
Business Strategy & Impact Advisory



Lise Isaro Katangulia
Architecture, 3D Design & Project Management



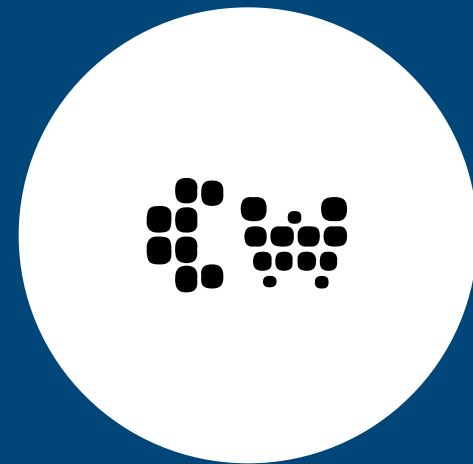
Mala Henriques
Impact Measurement



Mark Montgomery
Investment Readiness & Financial Strategy



Marius Chabi
Business & Leadership Development



Cornwine Studios
Creative Production Agency



Mukudzeishe Kasukusa
Business & Leadership Development



Patrick Cyusa
Business Development & Fundraising



Rudo Barbra Sibanda
Corporate Law, Compliance & Governance



Shary Lima
Logistics Management & Strategic Planning



Stanley Gichobi
Business Strategy & Market Research



Yannick Musafiri
Software development



Yvette Ishimwe
Business Model & Value Proposition Development



Impact Hub Network
Global Entrepreneurship Support

Our work is amplified by **a curated network of experts and collaborators supporting ventures across our programs.** [Click here to meet the full expert pool.](#)

Team Member Spotlight

The Architecture of Growth: The Mechanics of Impact

For Gloria, **impact is a process measured in better business models, smarter teams, and ventures that stop chasing survival and start planning for scale.**

"I'm driven by seeing startups grow, scale, and unlock investment through the tailored support they receive," she says. "Working with develoPPP Ventures and the Generation Africa Fellowship Program has shown me the power of enabling entrepreneurs to create meaningful impact."

She talks about results the way some people talk about art - by pointing to the details. The shift in a founder's confidence. A financial model that finally makes sense. A partnership that opens a new market. *"Seeing startups expand to other regions of Africa and even internationally is incredibly exciting," she says. "Facilitating connections, helping them learn from each other, seeing them refine their structures and unlock catalytic funding - those are the most rewarding moments."*

One company, UKC (Uruhimbizi Kageyo Cooperative), stands out. *"As part of the IHK portfolio, UKC was accelerated from the early stages, successfully unlocking investment of €100,000. Today, they're extending technical support to another company in Morocco, part of the Generation Africa Fellowship Program 2025, focusing on hydroponics solutions. Seeing how sustained guidance and support can transform ventures - helping them grow, innovate, and expand their impact - truly illustrates the value of this work."*

Looking ahead, Gloria is thinking about what holds startups back - and how to break those patterns.

"I'm excited about supporting startups to move beyond the early stage more quickly, helping them overcome common growth barriers and accelerate their path to traction. I'm particularly interested in models that reduce reliance on grant funding, encourage sustainable revenue generation, and enable ventures to scale while creating meaningful social and environmental impact."

If she had to define the Impact Hub Kigali team in one word, it's Innovation - not as a slogan, but as a way of operating. The kind that keeps questioning, keeps building, keeps learning.

And when that same team isn't deep in strategy sessions, they're out doing something unexpected. *"One memorable moment was during the Christmas party when the whole team played paintball," Gloria recalls. "It was my first time seeing everyone out of their work roles, full of competitive energy and having fun. Watching the team enjoy themselves so freely was both exciting and memorable."*

Her work, like that moment, is about seeing potential in motion - **structured, sustained, and real**



Gloria Mutoni

Junior Program Manager

Impact Hub Kigali



The work ahead is demanding — and we're entering it better **prepared**, more **intentional**, and **deeply committed** to impact.



@impacthubkigali

kigali.impacthub.net